



**NAPCO**<sup>®</sup>

333 Bayview Avenue  
Amityville, New York 11701  
For Sales and Repairs, (800) 645-9445  
For Technical Service, (800) 645-9440  
Publicly traded on NASDAQ Symbol: NSSC

© NAPCO 2010

# GEMC-BSLC-RLY NON POLARIZED SINGLE POINT RELAY MODULE DATA SHEET

WI1903 09/10

## GENERAL DESCRIPTION

The GEMC-BSLC-RLY "Non-Polarized" Single Point Relay Module is a low-current Form C relay interface accessory. The GEMC-BSLC-RLY provides a dry contact relay output for controlling bells, door latches, lights, strobes and other similar Burglary and Home Automation devices.

The GEMC-BSLC-RLY Relay Module connects onto the SLC Bus (polling loop terminals on the GEMC-BSLC

installed within a UL-Listed tamper-protected enclosure (i.e. GEMC-HSKIT12V-R, GEMC-HSKIT12V-CF or CI-HSKIT12V UL Listed Enclosure Subassembly with GEMC-TAMPERKIT).

## SPECIFICATIONS

### Electrical Ratings

#### Input Power:

**Voltage:** 13.6-16.5VDC (connected to the GEMC-BSLC).

**Current:** Standby, 3.0mA + 5.0mA with energized relay.

**Note:** The GEMC-BSLC-RLY is equivalent to 5 devices (and have a maximum distance of 3000 feet per home run when using 16AWG wire). See WI1648.

**Output Power:** Form C dry contact. Wire only to power-limited circuits.

**UL Contact Ratings:** 30VDC, 2A and 30VAC, 1A (resistive load).

**Maximum Wiring Length:** 3000' (#16 AWG). Refer to GEMC-BSLC documentation for complete wiring information.

**Operating Temperature:** 32° to 120°F (0° to 49°C)

## PHYSICAL

**Dimensions (inches):** Width: 1½ (38mm) Height: 3¾ (79mm) Depth: 1 (25mm)

## AGENCY LISTINGS

UL365: Police Station Alarm Units

UL609: Local Burglar Alarm Units and Systems

UL1023: Household Burglar Alarm System Units

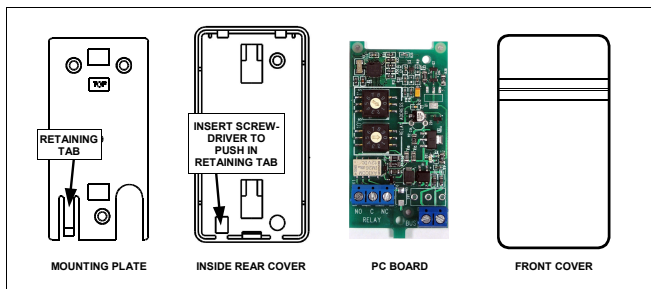
UL1610: Central Station Burglar Alarm Units

Security Industry Association (SIA) False Alarm Reduction Standard CP-01

FM Approval: (Pending)

## ORDERING INFORMATION

**GEMC-BSLC-RLY:** Addressable SLC Commercial Burg Device - 1 Point Output Module.



GEMC-BSLC-RLY Component Parts

board) along with such other accessories as GEMC-BSLC-1PT and GEMC-BSLC-4PT modules.

The GEMC-BSLC-RLY is easy to install--when wiring to the polling loop, the terminals (4 and 5) are non-polarized and so can be connected to either side of the SLC loop. Up to 88 GEMC-BSLC-RLY units may be used with any one Gemini C-Series control panel. Based on the available current the GEMC-BSLC provides, up to 44 GEMC-BSLC-RLY modules may be used with any one GEMC-BSLC.

The first 40 External Outputs (1-40) of the Gemini C-Series control panels are supervised Form C relay contacts (the position of the relay is supervised, but the external relay output wiring is not supervised for opens or shorts). Due to relay supervision, reporting and disabling options, we recommend these first 40 outputs be reserved for controlling Fire devices. Devices addressed as 41-88 are not supervised (do not have a local or remote trouble indication) and thus are for supplementary use only. For UL installations, the external device must be mounted no greater than 3 feet from the GEMC-BSLC-RLY module with no intervening walls or barriers. Refer to the control panel installation instructions for wiring requirements in UL-listed applications.

Other features include:

- Communication and operating power received from the control panel via the addressable polling loop
- Electronics enclosed within a easy to install plastic case
- Approved for Commercial Burglary and Residential Burglary installations. **Note:** For Commercial applications, the GEMC-BSLC-RLY module must be