



333 Bayview Avenue  
Amityville, New York 11701  
For Sales and Repairs, (800) 645-9445  
For Technical Service, (800) 645-9440  
Publicly traded on NASDAQ Symbol: NSSC



# GEMC-BSLC-1PT Single Point Expander DATA SHEET

© NAPCO 2010

WI11899 09/10

## GENERAL DESCRIPTION

The GEMC-BSLC-1PT is single-point expansion module. Terminals are provided for one supervised zone supporting normally-closed or normally-open contacts. Each expansion module has a unique factory-programmed code (printed on the label located on the rear case) that distinguishes itself to the receiver. **(Note:** See control-panel instructions for entering this six-digit hexadecimal code into the panel; be sure to enter all numbers and/or letters, including leading zeros, if any).

## SPECIFICATIONS

### Electrical Ratings

**Input Power:** 13.6-16.3VDC, 2mA supplied by GEMC-BSLC control unit.

### Output Power:

Zone Loop Ratings: 16V, 0.31mA, 0.34mA short.

**Maximum Zone Loop Resistance:** 300Ω.

**Maximum Wiring Length:** 3000' (#16 AWG). Refer to GEMC-BSLC documentation (WI1648) for complete wiring information.

**Operating Temperature:** 32° to 120°F (0° to 49°C)

Refer to PCD-Windows Quickloader download software's calculation tools for 24V standby current calculation.

## PHYSICAL

**Dimensions (inches):** Width: 1½ (38mm) Height: 3⅝ (79mm) Depth: 1 (25mm)

## AGENCY LISTINGS

UL365: Police Station Alarm Units

UL609: Local Burglar Alarm Units and Systems

UL1023: Household Burglar Alarm System Units

UL1610: Central Station Burglar Alarm Units

Security Industry Association (SIA) False Alarm Reduction Standard CP-01

FM Approval: (Pending)

## ORDERING INFORMATION

**GEMC-BSLC-1PT:** Addressable SLC Commercial Burg Device - 1 Point Input Module.

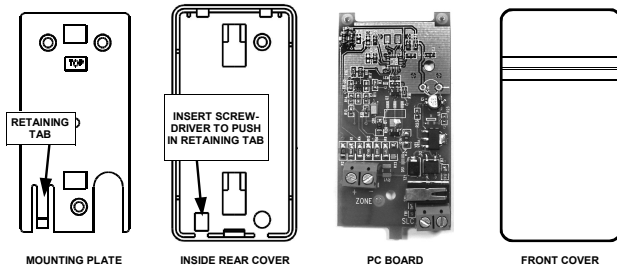


Fig. 1. GEMC-BSLC-1PT Expansion Module Component Parts

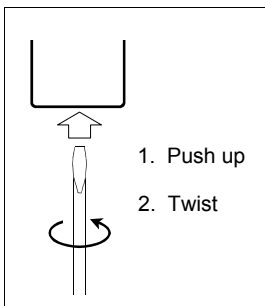


Fig. 2. Opening the case

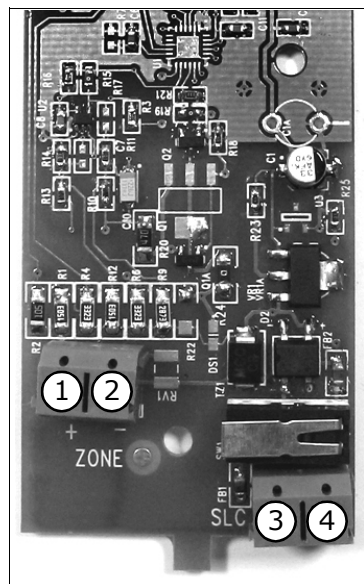


Fig. 3. Terminal Description:

- 1 = Zone Input
- 2 = Ground
- 3 & 4 = SLC Loop